

**Steel hinges for wooden windows and doors.
Specifications**

5088-94

34

91.060.50;
4983

1. () ,
2. () 17 1994 .
3. 5 19956 . N 18-29 5088-94
4. 5088-78. 1 1995 .
 1. 4.3, 4.5, 4.7, 4.8, 4.10, 4.11, 4.14 - 4.16.
 2. 9.303-84
397-79.
538-88.
1145-80.
11648-75.
 3. 3.1. , ; - ; - ; -

3.2.

3.3.

1.

1		1
2		2
3		3
4		4
5		5
6		6
7		7
8		8
9		9
10		10
1		11
2		12
3		13
4		14
1		15
2		16
3		17

3.4.

- -

:

: 1, 2

(9 -)

1.

1-110 5088-94

4-90-1 4 90 1:

4-90-1 5088-94

4.

4.1. 538

4.2. 1 - 4, 6, 10 1

4.3. (1 - 4, 6, 10, 11)

4.4. 7,

4.5. -0,3 0,1

0,5 0,1

4.6. 1 - 4 1
0,25 .

4.7. 10

4.8. 0,4 .

4.9. (8) 9 0,3 .

4.10. 2,2 1,0 - 2,2 . 0,5

4.11. 8 9 2 4
700 , , - ,

4.12. , ,

4.13. 1, 3, 5, 8 - 10 1 - 3, (2 - 3) 30°
5, 6 8

4.14. 800 (80) .

4.15. 2 7, 2 - 4 2 16 397
5-080 11648.

4.16. - 538.

9.303:
1 - 1-70, 1-85, 1-110, 2-70, 2-85, 2-110, 3-85, 4, 5,
6, 7, 1, 2, 3, 4, 1, 2, 3;
2, 3 - 1-130, 1-150, 2-130, 2-150, 3-110, 3-130, 3-150, 8,
9, 10.

4.17. - 538.

5.
5.1. 538 4.3 - 4.10, 4.12, 4.15
538. , 538
4.10 , ,

538 4.3 - 4.9, 4.12, 4.15
5.2. 4.14 8 9
4.11 .

5.3. - 538.

6.
6.1. - 538
6.2. 800 (80) 1

6.3. 8 9 4.11 2 4
700 1 .

7.
- 538.

8.
- 538.

1 - 4 70; 85; 98;
110; 130; 150

130; 150

5 40; 60

6 80; 110

7 1

2

8 110; 130

9 -

10 -

1 80; 100

2 1

2

3 1

2

4 1

2

1, 2, -
3

()

,

2-70	70	22	8	10	25	10	6	7	34	2,0	4	25	6
2-85	85	27	10	10	32,5	13	7	8	34	2,0 - 2,5	4	30	6
2-110	110	27	10	10	30	13	7	8	38	2,5 - 2,8	4	30	8
2-130	130	30	12	12,5	35	16	8	8	42	2,5 - 3,0	5	30	8
2-150	150	35	15	15	40	19	9	9	46	3,0	5	30	8

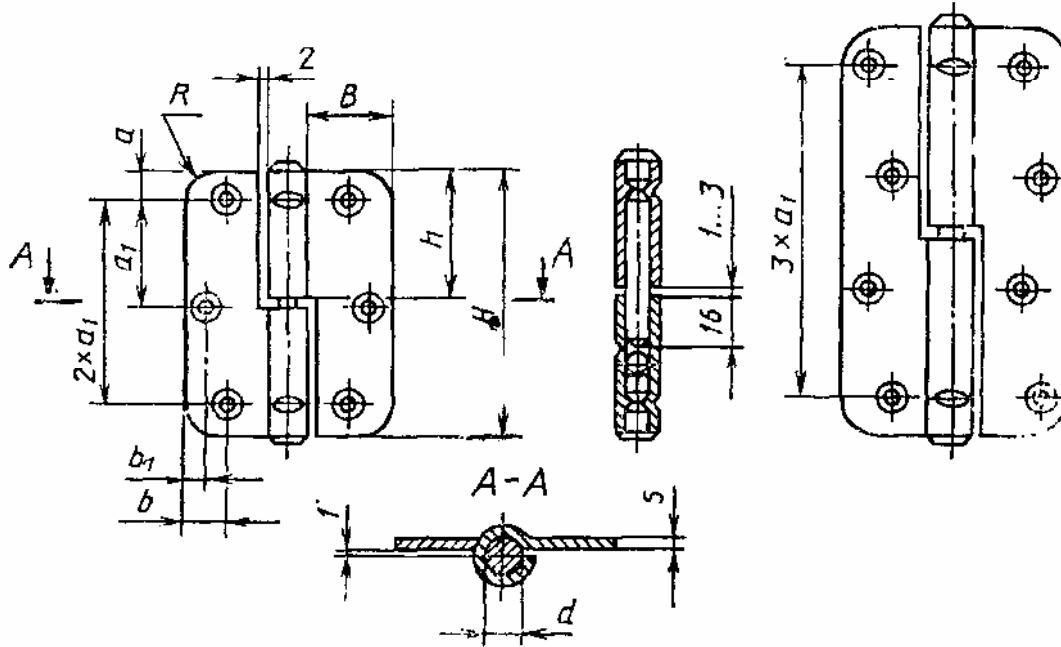
2.

2

Типоразмер ПНЗ—85

Типоразмеры ПНЗ—110, ПНЗ—130,
ПНЗ—150

Остальное — см. типоразмер
ПНЗ—85



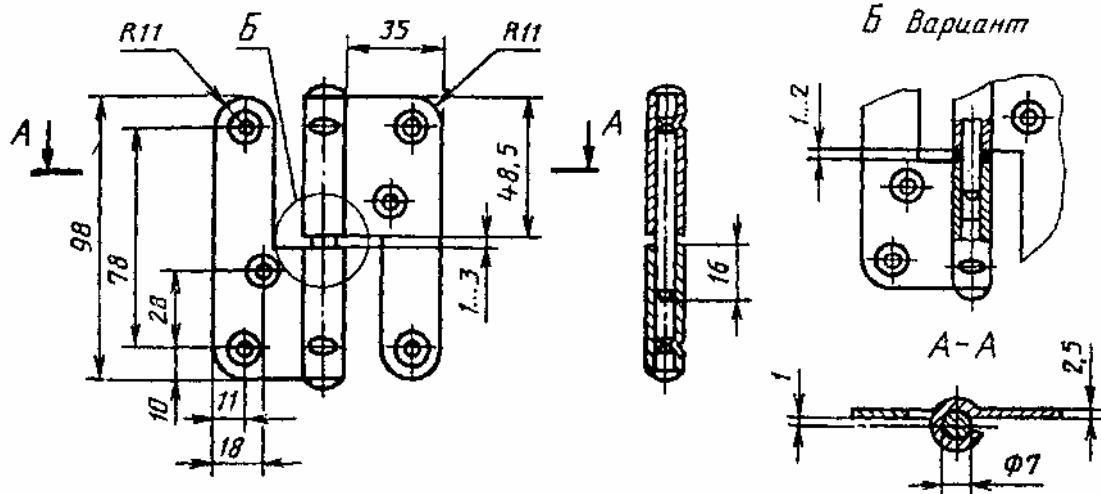
- H B R a a b b d h s
1 1

1145

3-85	85	27	10	10	32,5	13	7	8	41	2,0 - 2,5	4 x 30	6
3-110	110	27	10	10	30	13	7	8	53,5	2,5 - 2,8	4 x 30	8
3-130	130	30	12	12,5	35	16	8	8	63,5	2,5 - 3,0	5 x 30	8
3-150	150	35	15	15	40	19	9	9	73,5	3,0	5 x 30	8

3.

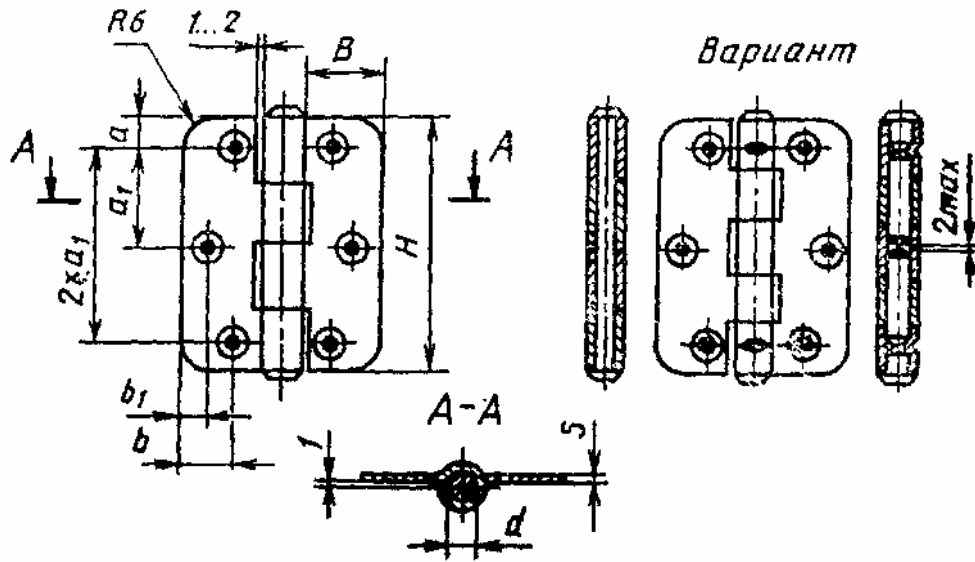
3



Б Вариант

4.

4



H B a a b b d s
1 1

1145

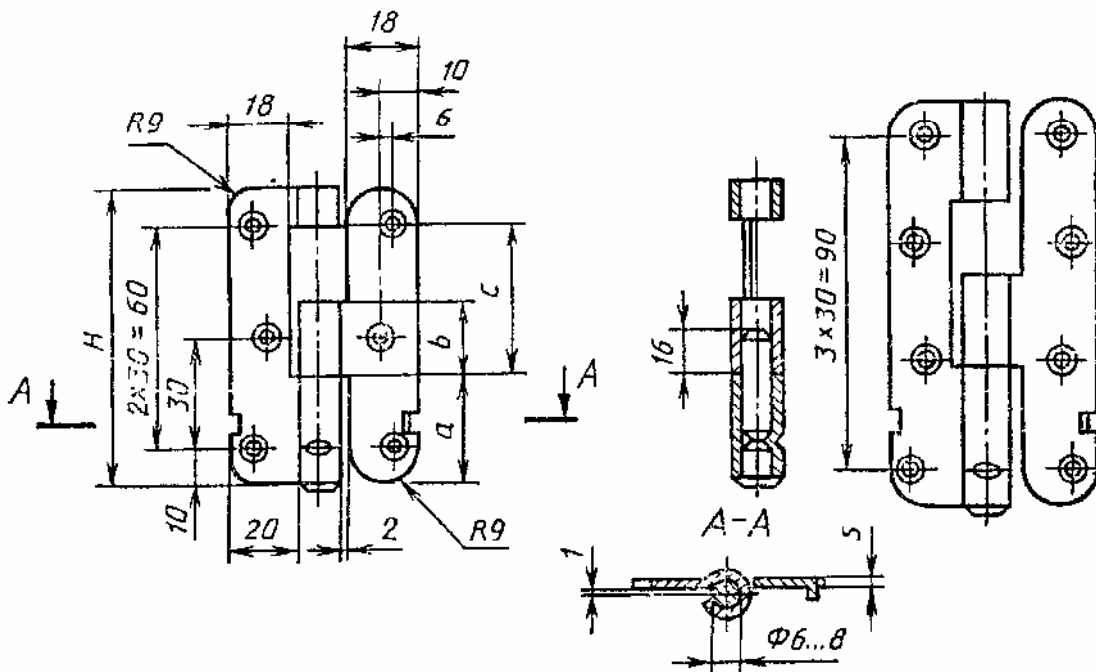
5-40	40	16	6	-	6	-	4	1,5 - 1,6	3 x 25	4
5-60	60	20	8	22	12	7	5	1,6 - 2,0	3 x 25	6

5.

5

Типоразмер ПН6—80

Типоразмер ПН6—110
Остальное — см. типоразмер
ПН6—80



H a b c s

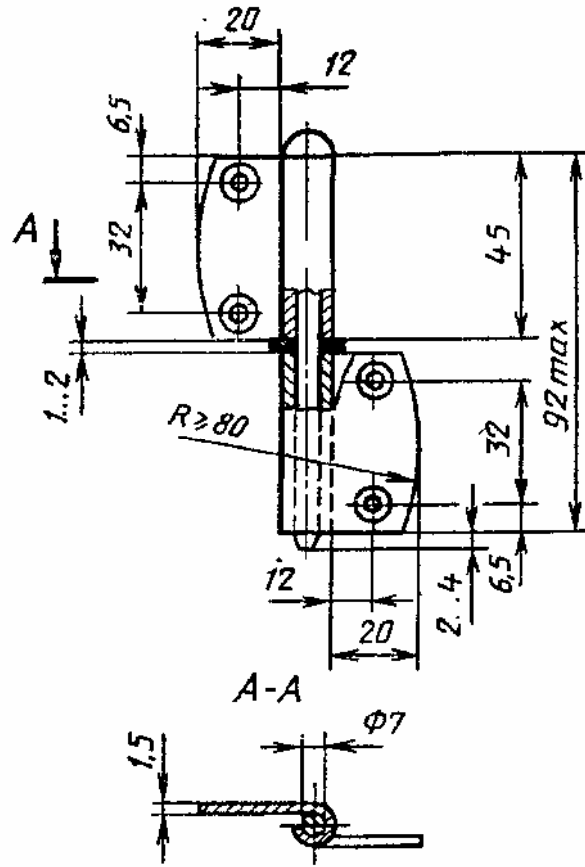
1145

6-80	80	31	20	39	2,5	4 x 25	6
6-110	110	38	25	44	2,5 - 2,8	4 x 25	8

6.

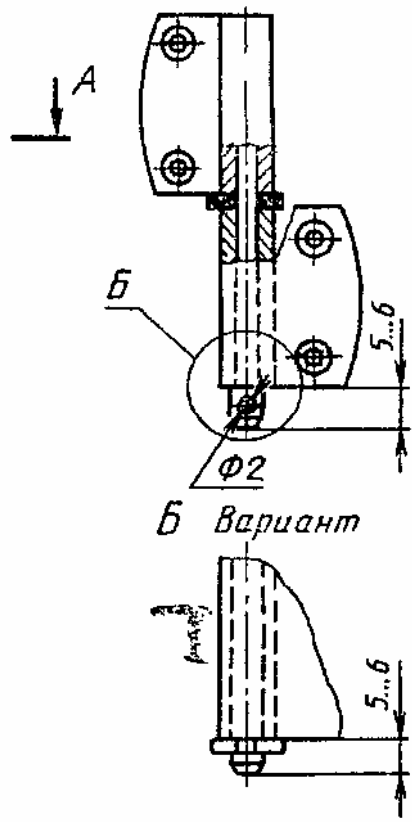
6

1



2

1

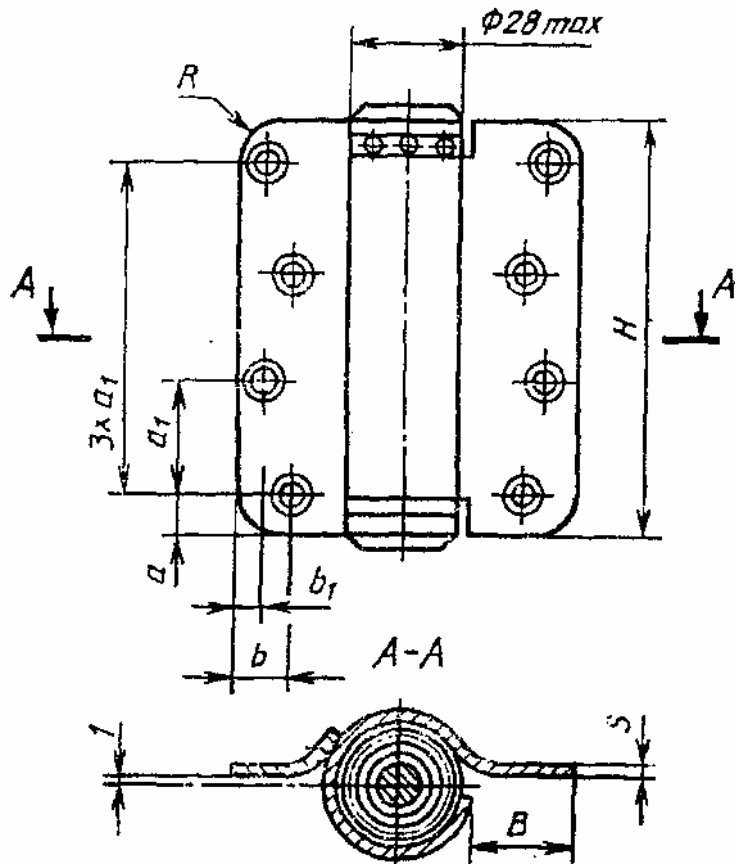


Б вариант

3 x 25 (4 .) 1145

7.

7

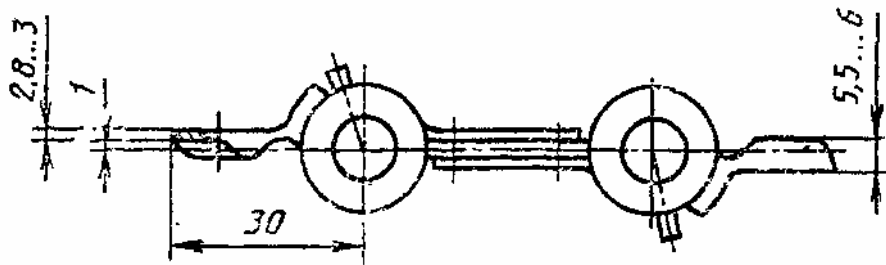
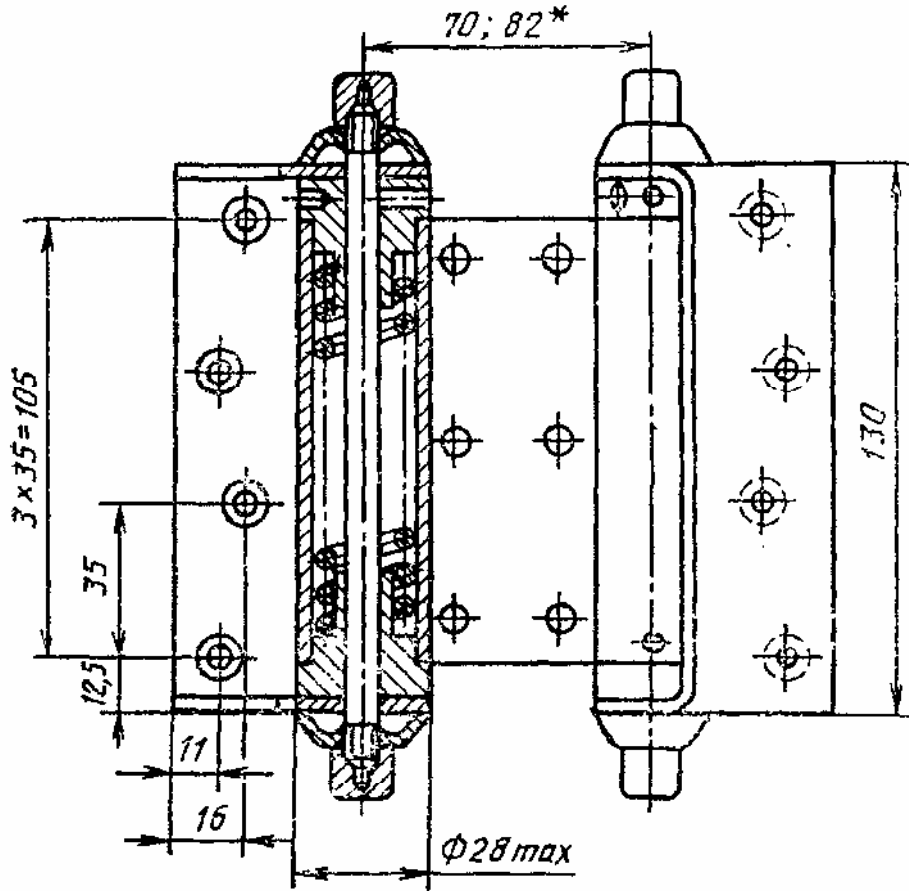


- H B R a a b b s 1145
1 1

8-110 110 27 10 10 30 13 7 2,8 5 x 30 8

8.

8



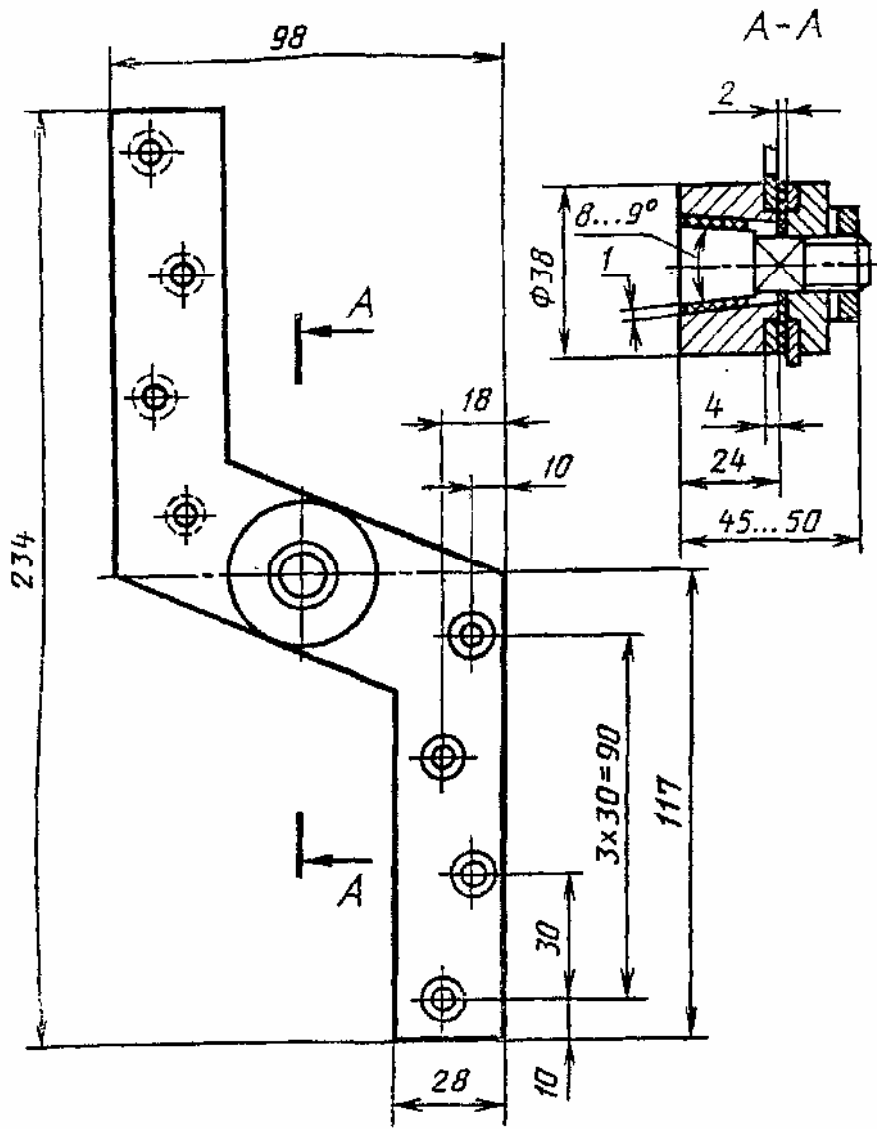
5 40 (8 .) 1145

<*>

52

9.

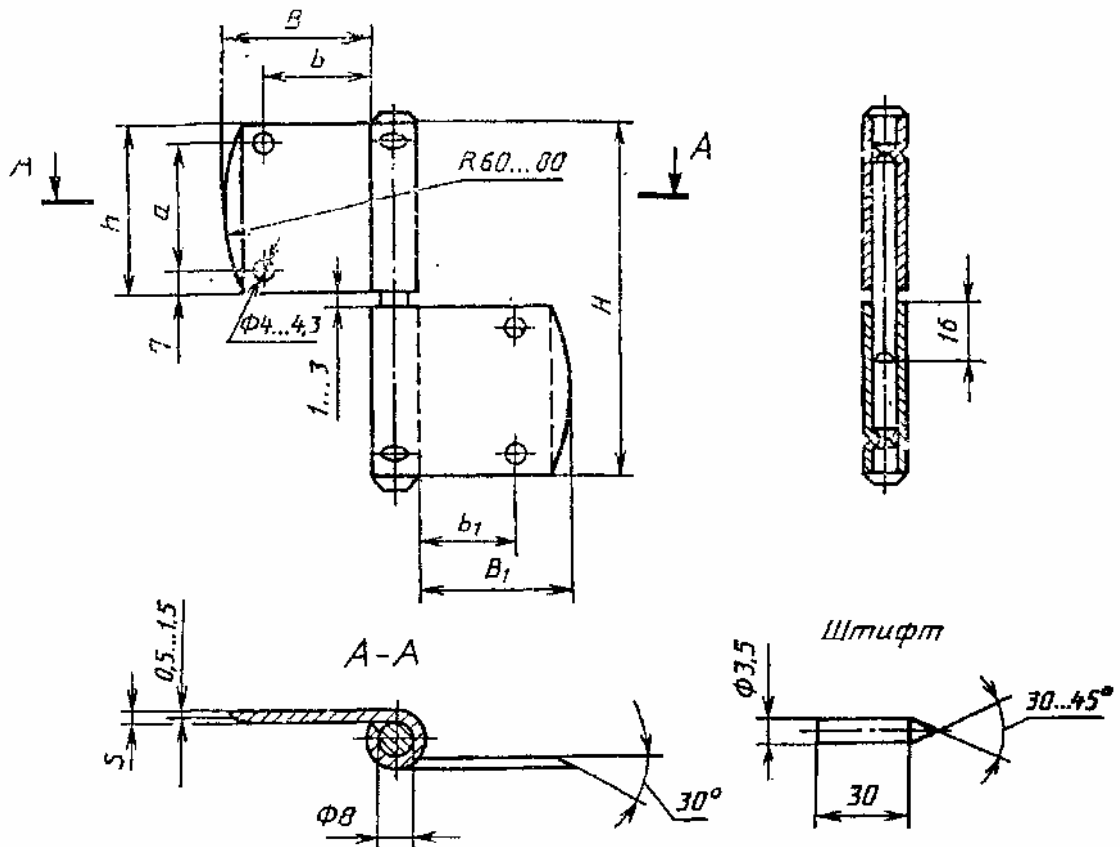
9



5 35 (8 .) 1145

10.

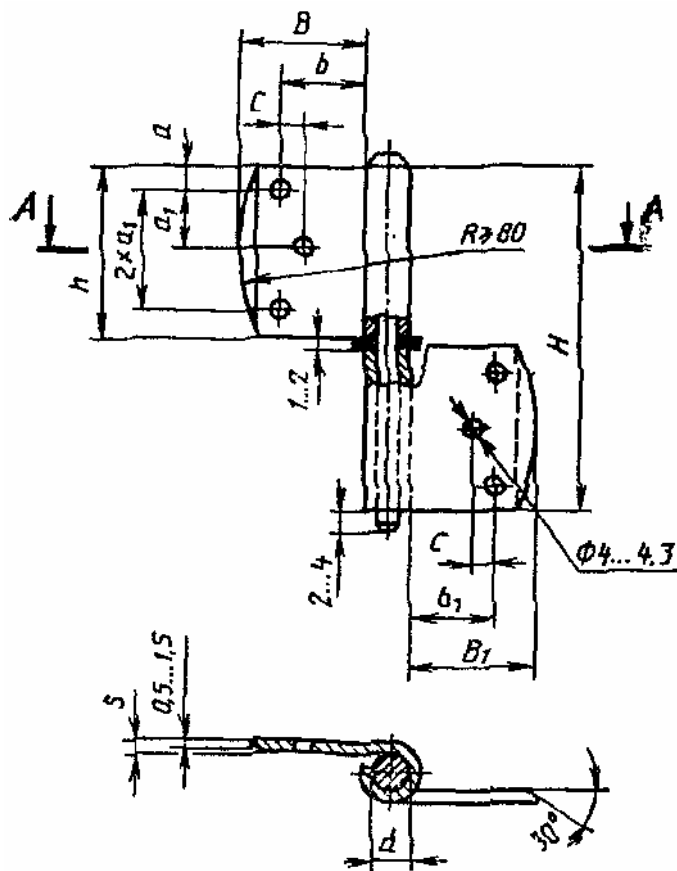
10



	H	B	B ₁	a	b	b ₁	h	s	
1-80	80	35	28	25	28	21	39	2,0 - 2,5	4
1-100	100	42	35	35	34	27	49	2,5 - 2,8	4

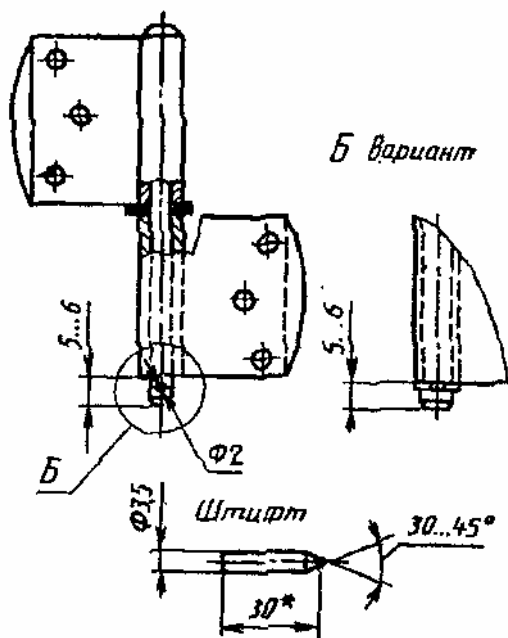
11. 1

1



2

1



<*>

35

45

-

-	H	B	B	a	a	b	b	c	h	d	s	.
	max		1		1		1					<*>

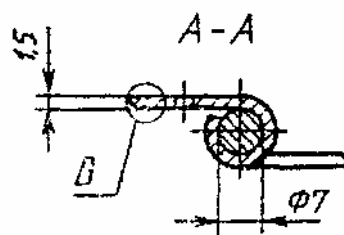
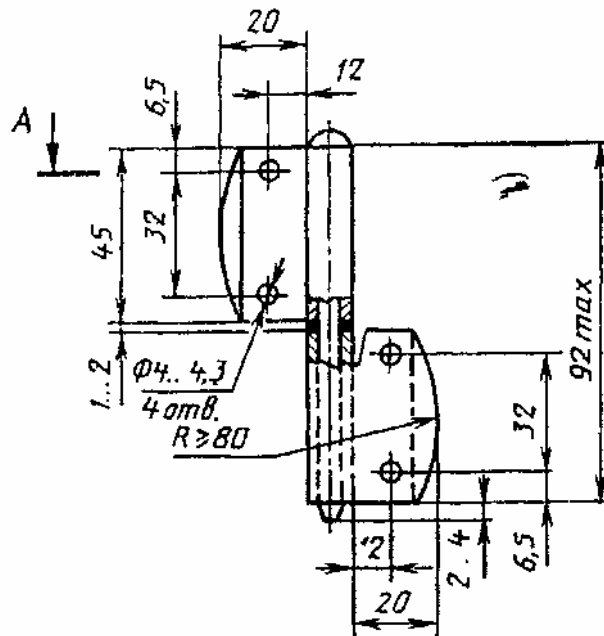
2-75	75	30	25	6	12,5	23	15	-	37	7	2,0	- 2,5	4
2-100	100	35	30	7,5	17	25	18	-	49	7	2,5		4
2-125	125	45	35	10	20,75	32	22	6	61,5	8 - 9	2,5		6

<*>

12.

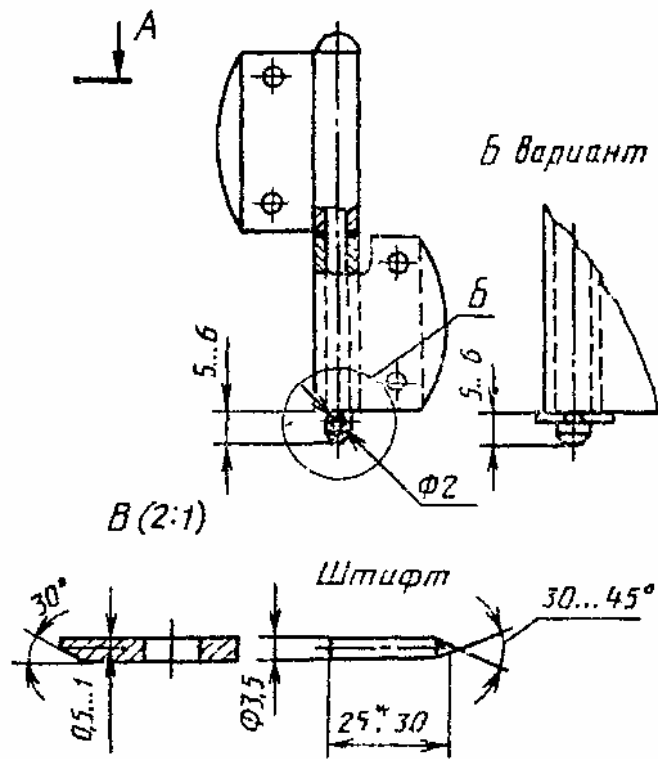
2

1



2

1



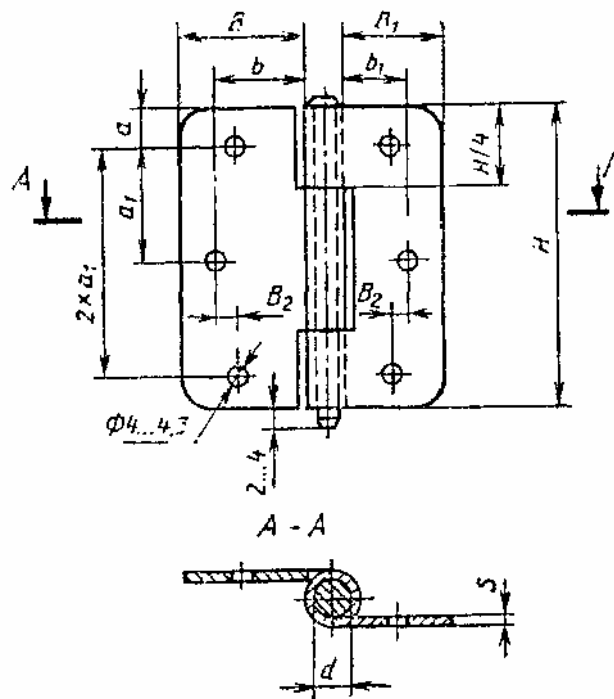
<*>

- 4 ;

13.

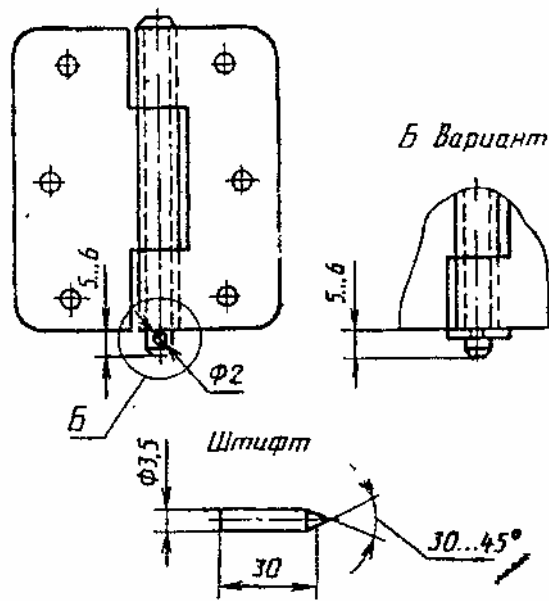
3

1



2

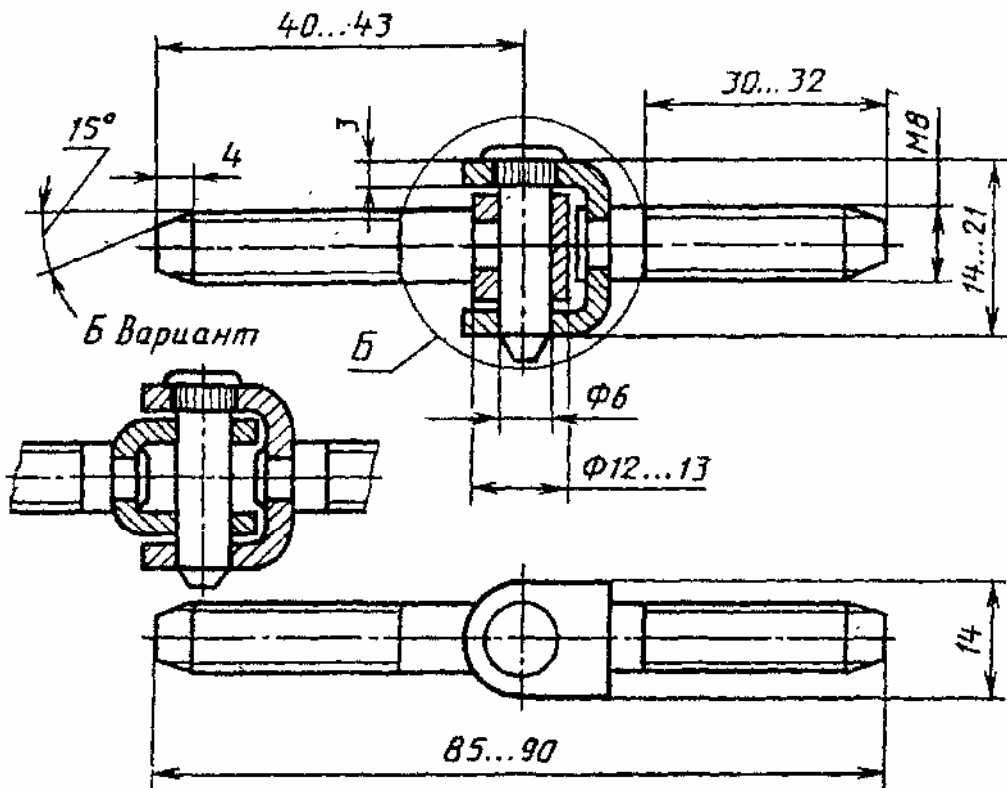
1



-	H	B	B ₁	B ₂	a	a ₁	b	b ₁	d	s	.
4-60	60	30	22	-	7,5	22,5	23	15	6	2,0	4
4-75	75	35	27	5	10	27,5	28	20	7	2,0 - 2,5	6
4-90	90	35	27	5	10	35	28	20	7	2,5	6

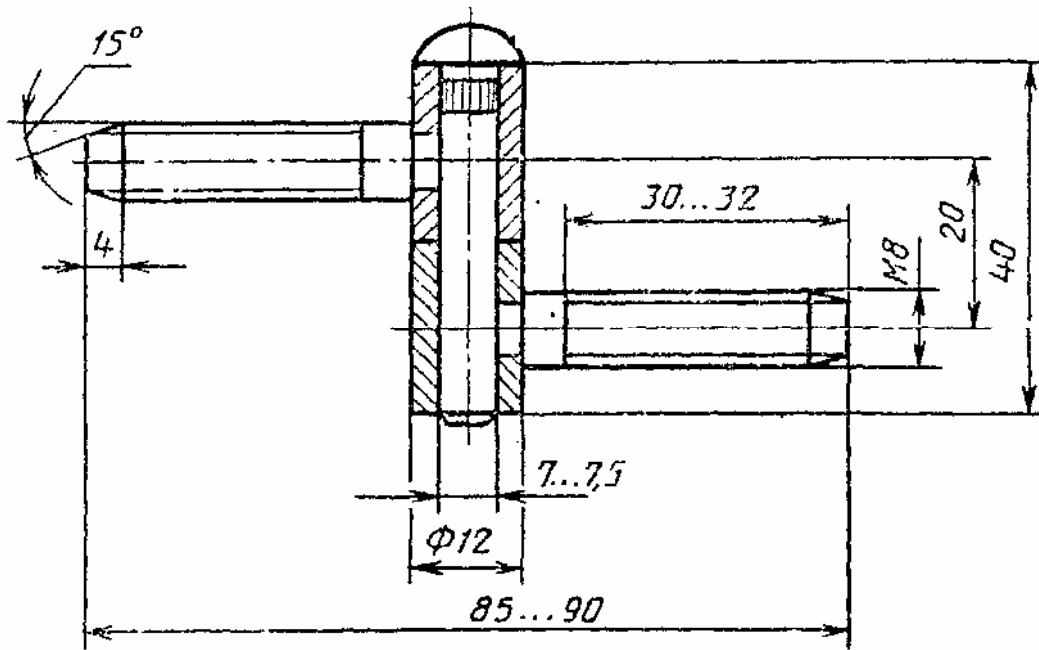
14.

4



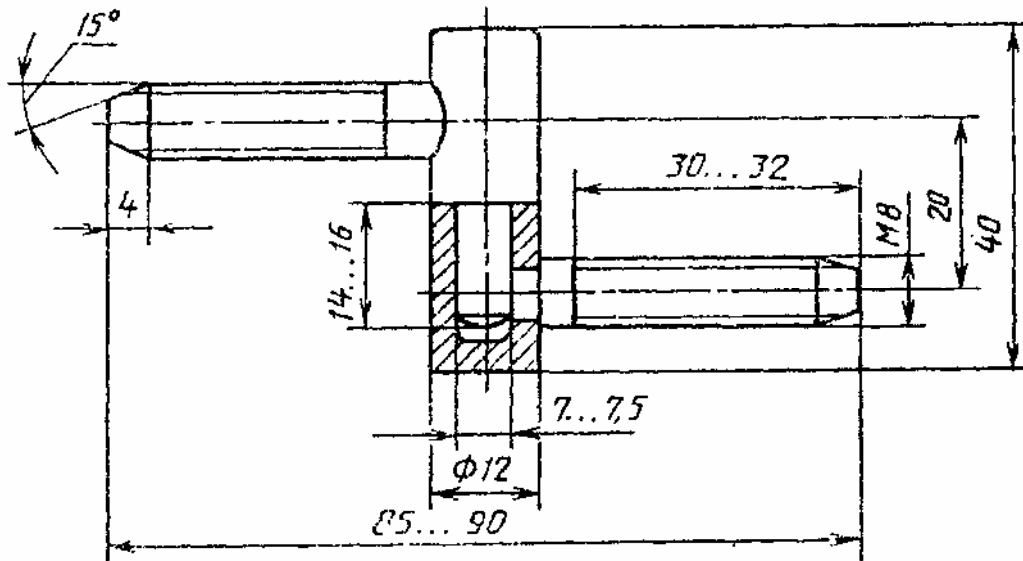
15.

1



16.

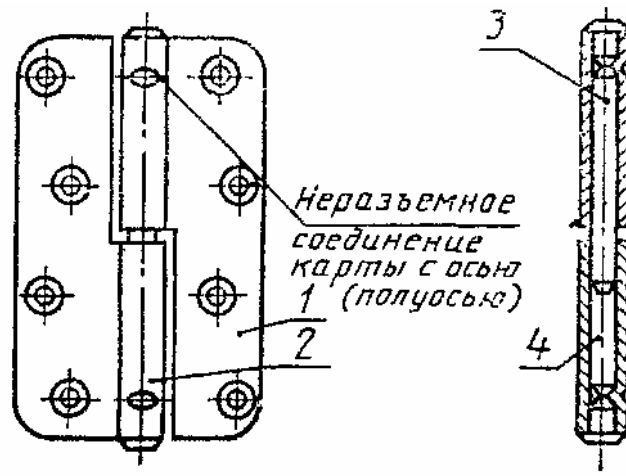
2



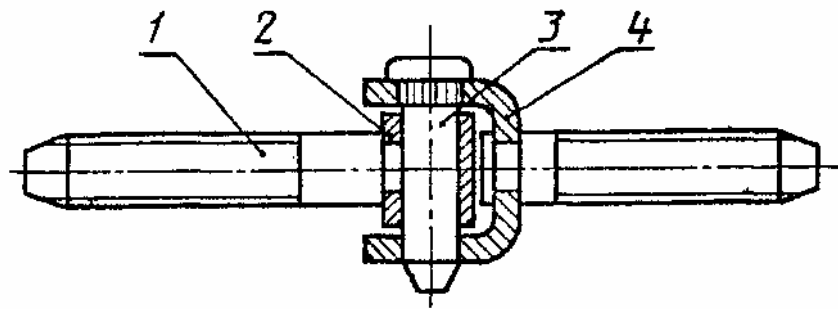
17.

3

()



1- ; 2- ; 3- ; 4-



1- ; 2- ; 3- ; 4-